

ANNUAL REPORT

2018

OUR MISSION

Polk Vision actively facilitates a process through which Polk County realizes its aspirations and full potential. Polk Vision identifies and builds awareness of community priorities, promotes partnerships and encourages accountability.

ABOUT US

In 2004, citizens from across Polk County, led by private, public and civic leaders, joined forces to address critical issues facing our community and to develop a common purpose. Focus groups, town hall meetings and task forces were engaged in a nine-month process to gain insight into the priorities that unite and challenge our community. Together we examined our strengths and weaknesses, and developed a long-term vision with strategic solutions and countywide benchmarks. The strategies were adopted by public and private organizations, large and small, with a common goal to create our desired future.

Over the years, Polk Vision has remained vital and relevant through the continued engagement of citizens by conducting public meetings, forums and roundtable sessions.

A formal “refresh” of the Vision was performed in 2010 which resulted in updated strategies and adjusted benchmarks. In the fall of 2014, with the encouragement of visionary supporters, we became members of the national collective impact organization Alignment USA. Through this relationship, we integrated new structure, process and technology with the Polk Vision founding principles and areas of focus.

Polk Vision is the LEADing collective impact organization serving the entire Polk County community. We provide central coordination to align the work of hundreds of dedicated volunteers through partnerships of public, private and civic organizations working collectively to make the shared vision of improved community prosperity for Polk County a reality!



Elaine Thompson, Ph.D.

Chair

President & CEO, Lakeland Regional Health

It has been my honor to serve as this year's Chair for Polk Vision. I am grateful for the enthusiasm and support of the hardworking Polk Vision staff members and volunteers. It is inspiring to work with such a dedicated team of selfless individuals, organizations and industry leaders for the good of our community. Polk Vision's gifts to those it serves are many: collaboration, passion, accountability, creativity, and diversity. Together, I have no doubt this organization will continue to use those gifts in the future to take on issues important to all of us. Thank you for making this an outstanding year.



Alex Nikdel

Chair Elect

President, CNP

Polk Vision is the only organization in the county charged with aligning the efforts of the many hard working public, private and civic organizations to ensure everyone is collaborating, sharing resources and working toward the same end goal of improving the quality of life for all Polk County citizens. Together, we have made some informed decisions about where we want to go as a community, and the LEAD teams have made impressive progress in carrying out their plans. We are moving our community in a positive direction that will no doubt benefit Polk County for generations to come. I am proud to have been involved in Polk Vision for the past several years and am excited about the impact we can make on our community in the years ahead.



Greg Littleton

Immediate Past Chair

CEO & President,
Citizens Bank & Trust



Jerry Miller

Treasurer

Government &
Community Relations
Manager, Duke Energy



Kim Long

Secretary

Executive Director,
Polk Vision, Inc.



Colleen Mangan

Operating Board Chair

Public Health Services
Manager, Florida
Department of Health
in Polk County



Melony Bell

Director

Commissioner, Polk
County BoCC



Stacy Butterfield

Director

Clerk of Courts &
Comptroller, Polk
County



Jackie Byrd

Director

Superintendent, Polk
County Public Schools



Tony Delgado

Director

City Manager, City of
Lakeland



**Angela Falconetti,
Ph.D.**

Director

President, Polk State
College



Kay Fields

Director

Member, Polk County
School Board



Jim Freeman

Director

County Manager, Polk
County BoCC



Doug Lockwood

Director

Attorney, Straughn &
Turner, P.A.



Sean Malott

Director

CEO, Central Florida
Development Council



Pat Steed

Director

Executive Director,
Central Florida
Regional Planning
Council



Roy Tyler

Director

Mayor, City of Haines
City



A Message from the Director

Kim Long

Executive Director, Polk Vision, Inc.

An abiding commitment to making connections through civic engagement and leadership has been the hallmark of Polk Vision since it was established 14 years ago. Indeed, our effectiveness as an organization is due to the mutually respectful relationships that have been forged as a connected community of citizens and colleagues from across the county.

As we reflect upon our work this past year, we have much to celebrate including the thoughtful and principled leadership provided by our Governing Board. This year our Chair, Dr. Elaine Thompson, guided the process of clarifying the long-term outcomes that underpin the work of the organization. This clarity of direction brought sharper focus to the work of the Operating Board and LEAD Teams as they continued making connections towards achieving sustainable solutions to many of the complicated issues facing our community.

The strong connection between our volunteer leadership and the small (but mighty) staff is integral to the success of our organization. These wonderfully nimble and passionate individuals serve as fidelity keepers for the alignment process and standard bearers for the mission and values at the heart of Polk Vision.

A year full of promise is before us as we welcome new Officers and Directors to our Governing Board; herald the tenacity of our Operating Board; and continue to benefit from the expertise of many devoted volunteers committed to this important work. Through this connected community, we are making our shared Vision for the future of Polk County a reality.

Staff



Reba Coil

Program Manager



Brenda Torres

Team Coordinator



Pauline Simmonds-Brown

Education and
Talent Alignment
Coordinator



Colleen Mangan

Operating Board Chair

Public Health Services Manager, Florida
Department of Health in Polk County

This year, Polk Vision has once again tackled difficult issues, identifying inequities within our community and strengthening our work to address them. We have honed in on the long term outcomes around which all of our efforts will align and have worked diligently on strategies that will create positive, sustainable change. I am incredibly honored to work with individuals who are dedicating time and expertise to strive for excellence, address the uncomfortable issues, ask the difficult questions, engage diverse groups in finding solutions, and redefine what it means to work collaboratively throughout our great county.



Terry Brigman

Operating Board Chair-Elect

Smart Communities Team Co-Chair
CIO & Director of IT, City of Lakeland

Polk Vision has done an outstanding job of identifying and focusing on the most significant issues facing the citizens of our community. And more importantly Polk Vision has assimilated a caring and knowledgeable group of concerned and connected individuals to make measurable progress towards addressing these issues. These individuals include our staff, our Board, our Operating Board, our LEAD Teams and every concerned citizen willing to be involved in designing and implementing solutions. We are all inclusive and we connect with engaged problem solvers across our County.

The work to be done is not for the faint of heart. Progress requires perseverance, endurance, patience and a never-ending willingness to continue the pursuit of our goals. I am continually impressed by my friends and neighbor's imagination, dedication and fortitude. I have no doubt that because of all the efforts of amazing people that Polk County will continue to improve and will lead the state and the nation in building a community that exceeds our wildest dreams. Go Polk!

Katie Worthington
Operating Board
Immediate Past Chair
Winter Haven
Chamber of
Commerce

Marcia Andresen
Quality of Life Team
Chair
Polk County BoCC

Kelly Andrews
BHP: Worksite
Wellness Team
Co-Chair
Kelly Andrews, LLC

Liz Antaya
BHP: Worksite
Wellness Team
Co-Chair
Stahl & Associates
Insurance

John Bohde
Infrastructure Team
Chair & Leadership
Polk Alumni Chair
Polk County BoCC

Naomi Boyer, Ph.D.
Talent Pipeline Team
Co-Chair
Polk State College

Pam Craven, Ph.D.
Literacy Team
Co-Chair
Learning Resource
Center

Mary Crowe, Ph.D.
Pedestrian and
Bicycle Safety Team
Co-Chair
Florida Southern
College

Julia Davis
Liaison
Polk TPO

Tom Deardorff
Benchmarks &
Pedestrian and
Bicycle Safety Team
Co-Chair
Polk County BoCC

Deric Feacher
Leadership Polk Class
XI Chair
City of Haines City

Shannon Gillespie
Attendance Team
Co-Chair
Polk County Public
Schools

Marc Hutek, Ph.D.
Community Schools
Team Co-Chair
Polk County Public
Schools

Alaina Johnson
Talent Pipeline
Team Co-Chair
Lakeland Regional
Health

Jenna Kaczmariski
BHP: School Health
Team Co-Chair
Polk County Public
Schools

Eric Labbe
Smart Communities
Team Co-Chair
City of Winter Haven

Janet Lamoureux
Attendance Team
Co-Chair
Polk County Council
PTA

Jenna Levine
Liaison
Florida Department of
Health in Polk County

Matt Mucci
Government Advisory
Team Co-Chair
AT&T

Andrea Nikolai
Liaison
University of Florida/
IFAS

Lauren Springfield
Liaison
Lakeland Regional
Health

Lindsay Persohn, Ph.D.
Literacy Team
Co-Chair
Polk County Public
Schools

Donna Sheehan
Government Advisory
Team Co-Chair
City of Winter Haven

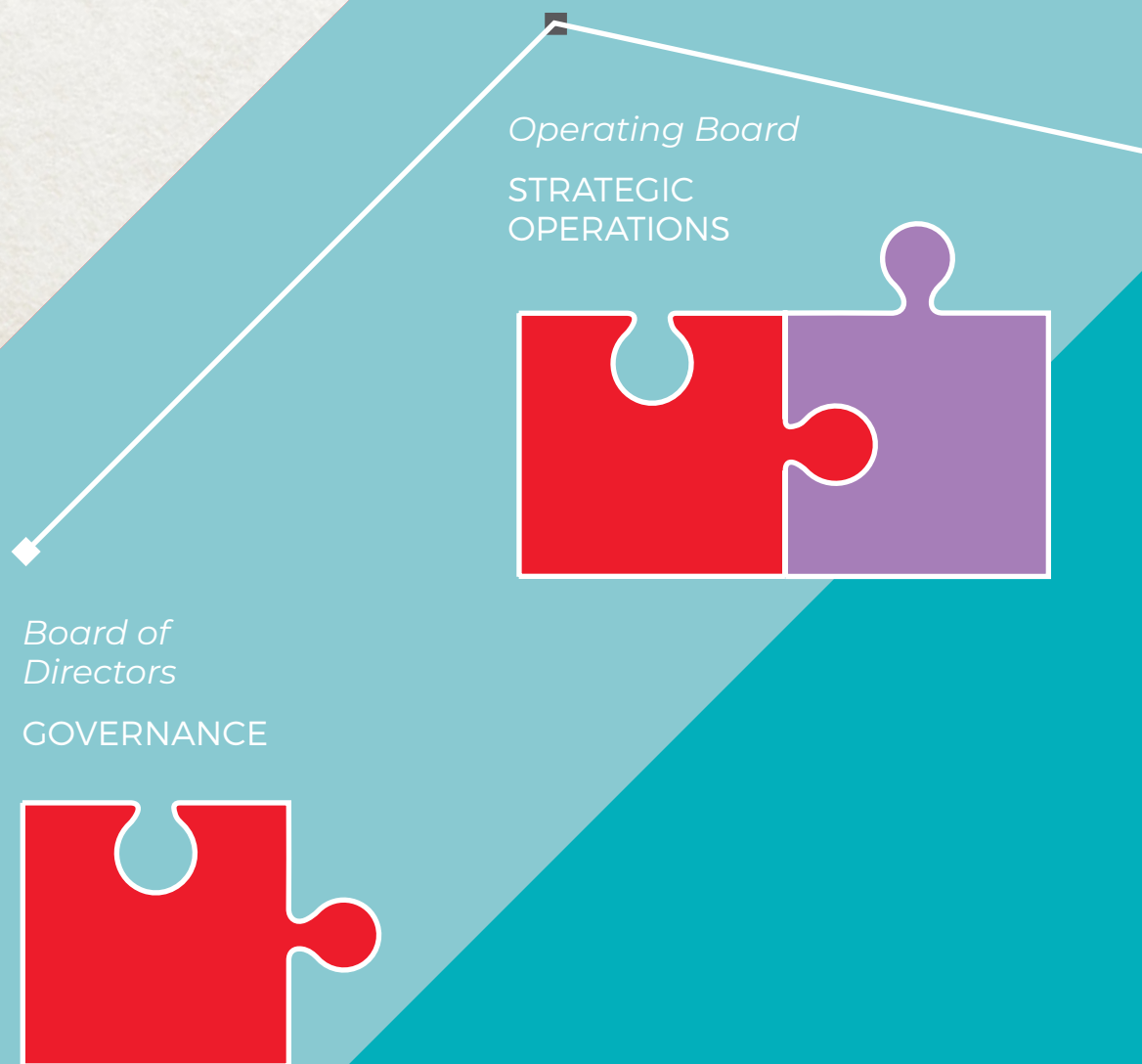
Ed Shoemaker, Ph.D.
Community Schools
Team Co-Chair
Mr. Ed's Circle of Trust

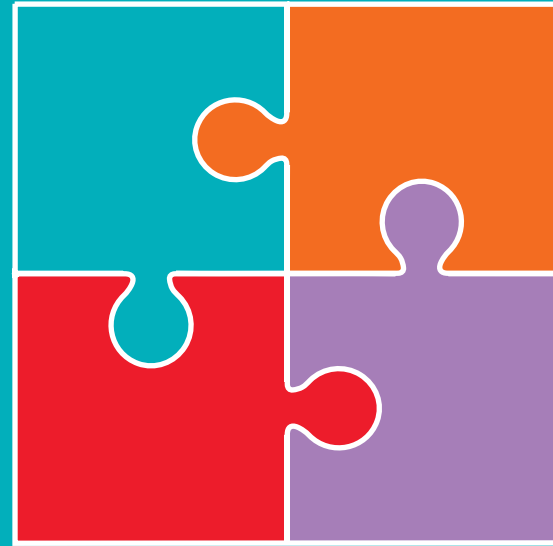
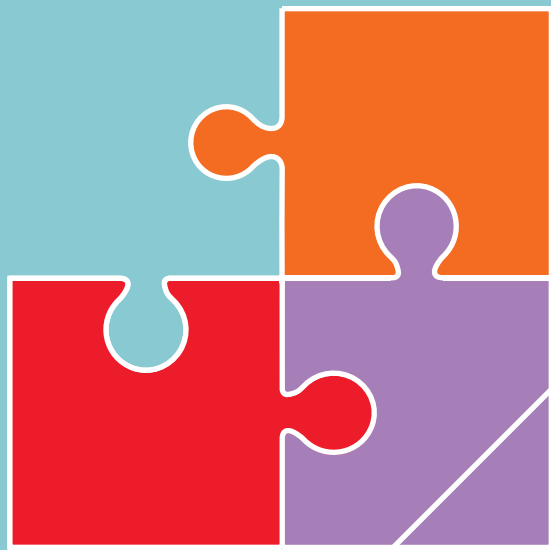
Holly Vida
BHP: Primary Care
Team Co-Chair
Bartow Regional
Medical Center

Kathleen Wright
BHP: School Health
Team Co-Chair
Polk County Public
Schools

Suzanne Wright
BHP: Primary Care
Team Co-Chair
Florida Department of
Health in Polk County

How we're structured



*LEAD Teams***SOLUTION DESIGN & IMPLEMENTATION***Foundational Areas of Focus*

EDUCATION

ECONOMIC DEVELOPMENT

INFRASTRUCTURE

GOVERNMENT

QUALITY OF LIFE

CIVIC ENGAGEMENT

Polk Vision is governed by a Board of Directors which oversees the Operating Board in its leadership of Teams working collaboratively on a range of complex issues in six foundational areas of focus.

PRINCIPLES

These principles ensure our work is targeting systemic change or new ways of aligning resources to address underlying causes. Systemic change occurs when an outcome or goal has been attained. This achievement is either through the elimination of the problem or through permanently aligning programs, policies, funding streams or services to reduce the impact of the problem on a long term basis.

Polk Vision strives to:

- Align and engage all stakeholders throughout the county with strategies in six foundational areas of focus: Education, Economic Development, Infrastructure, Government, Quality of Life and Civic Engagement.
- Cultivate an environment of mutual trust and collaboration while working with transparency and a high level of accountability.
- Unify initiatives across the county through a comprehensive, collaborative, multi-faceted process that is recognized as generational; requiring significant time to achieve change and maximum impact.

L

LEARN

E

ENGAGE

A

ALIGN

D

DEVELOP

Process & Technology

As facilitators of a countywide collaboration among schools, non-profits, businesses, and the public sector, Polk Vision offers a framework for achieving sustained improvement.

The work is dynamic and requires continuous learning and adaptive solutions in addressing a range of complex issues. Polk Vision refers to this as our LEAD process: **Learn** all we can about an issue, **Engage** community partners knowledgeable and passionate about the issue, **Align** resources to address the issue and **Develop** plans that will result in systemic change.

This countywide collaborative process provides the following advantages:

- **GREATER RETURNS ON INVESTMENT** – By working together toward common goals, resources are leveraged, duplication is avoided, and efficiency is greatly increased.
- **HIGHER QUALITY SERVICES** – Utilizing expertise from multiple organizations guarantees a broader perspective and a wiser approach.
- **ENHANCED CAPACITY** – A collective effort enhances the impact of each organization while generating a much greater overall outcome.

Polk Vision's membership in the Alignment USA network has provided us with a technology tool to power our principles, structure and process. This online portal allows our LEAD Team members, community partners and staff to collaborate, measure and report progress, capture information and warehouse our collective work.

Foundational Areas of Focus

In order to achieve the overarching priority of improved community prosperity before 2030, Polk County will have:



EDUCATION

A world-class, fully integrated education system that supports the needs of a vibrant, progressive community.



ECONOMIC DEVELOPMENT

An economic development environment that attracts quality businesses with higher paying jobs, improves productivity and retains educated young people.



INFRASTRUCTURE

Growth management and infrastructure that protects the environment, enhances quality of life, supports education and economic development and is economically sustainable.



GOVERNMENT

A comprehensive system of government that is effective, efficient, diverse and responsive to the basic needs of its citizens.



QUALITY OF LIFE

A quality of life that encourages diverse backgrounds to live in harmony while developing physically, spiritually, mentally and culturally within a healthy and safe environment.



CIVIC ENGAGEMENT

Private sector leadership that drives the partnership with government and citizens to ensure that Polk County is a premiere place to live, learn, work and play.

Long-Term Outcomes

Each Alignment Team creates a Tactical Plan that begins with one or more of the Long-Term Outcomes listed below. The Teams work backwards from the selected long-term outcome(s) creating mid and short term outcomes and design tactics that best align community resources.

This process ensures that multiple approaches are considered. For example, the Infrastructure Team links their work on sidewalk mapping with Healthy Weight and High School Graduation Rates – demonstrating the importance of collective impact when addressing complex issues.



**IMPROVE
HIGH
SCHOOL
GRADUATION**



**IMPROVE
COLLEGE
& CAREER
READINESS**



**IMPROVE
HEALTHY
WEIGHT
RATE**



**IMPROVE
PEDESTRIAN
& BICYCLE
SAFETY**



2017 - 2018

LEAD Team Progress Reports

Every LEAD Team is working to achieve long-term outcomes that directly tie to one or more foundational areas of focus. Yet each Team has selected a different strategy and devised different tactics to achieve the desired outcome.



EDUCATION

“ Let us think of education as the means of developing our greatest abilities, because in each of us there is a private hope and dream which, fulfilled, can be translated into benefit for everyone and greater strength for our nation. ” — John F. Kennedy



ABOVE: Connie Loutzenhiser, Principal at Eagle Lake Elementary, celebrates her attendance heroes by regularly posting progress reports on her Challenge 5™ Campaign bulletin board.



ABOVE: Support at the District and School leadership level is at the core of any pilot program. Polk County School Board Members officially launched the Challenge 5™ pilot program on November 14, 2017.



CHALLENGE 5™ PILOT SCHOOLS

CODE Academy

Eagle Lake Elementary

Garner Elementary

Griffin Elementary

Palmetto Elementary

Permission to use Challenge 5™, Strive for Less Than Five™ Days Absent Campaign granted on behalf of Believe 2 Become (B2B,) an initiative of the Doug and Maria DeVos Foundation.

Attendance LEAD Team

The Polk County School District's Strategic Plan identifies reducing student absenteeism as key to improving student achievement. The Attendance Team is committed to finding a systemic solution to this widespread problem facing students of all ages and grades. Starting as early as pre-school and kindergarten, chronic absence can leave third graders unable to read proficiently, sixth graders struggling with coursework and high school students off track for graduation.

Inspired by the success achieved by the Grand Rapids, Michigan School District (Believe 2 Become, 2016), the Polk Vision Attendance Team together with Polk County Public Schools adopted a multi-pronged tactical plan that entered its first-year pilot phase in Fall 2017. Five area elementary schools began integrating elements of an actionable messaging campaign, Strive For Less Than 5™ Days Absent, intended to activate parents as partners and engage the local community as stakeholders.

The launch of the campaign was scheduled to coincide with the first week of September in recognition of Attendance Awareness Month. Unfortunately, the campaign was sidetracked with countywide preparations for Hurricane Irma. The storm severely impacted Polk County and the Challenge 5™ campaign faltered due to the direct and residual effects of the hurricane. Despite the staggered start, the video featuring Supt. Byrd and Sheriff Judd was central to the messaging campaign and, once aired, provided much needed momentum to the movement.



Vision

Before 2030, Polk County will have a world-class, fully integrated education system that supports the needs of a vibrant, progressive community.

As we enter year two of the pilot, the Strive for Less Than 5™ video will continue to anchor the campaign. The outreach will be expanded to include broader community awareness and volunteer recruitment to support attendance at the schools. Each of the five schools will be provided a variety of campaign materials including a wall mural, posters, outdoor signage and a standardized system to award and incentivize students.

1 IN 6

Kindergartners were chronically absent last year. That is approximately 157 hours of class time.

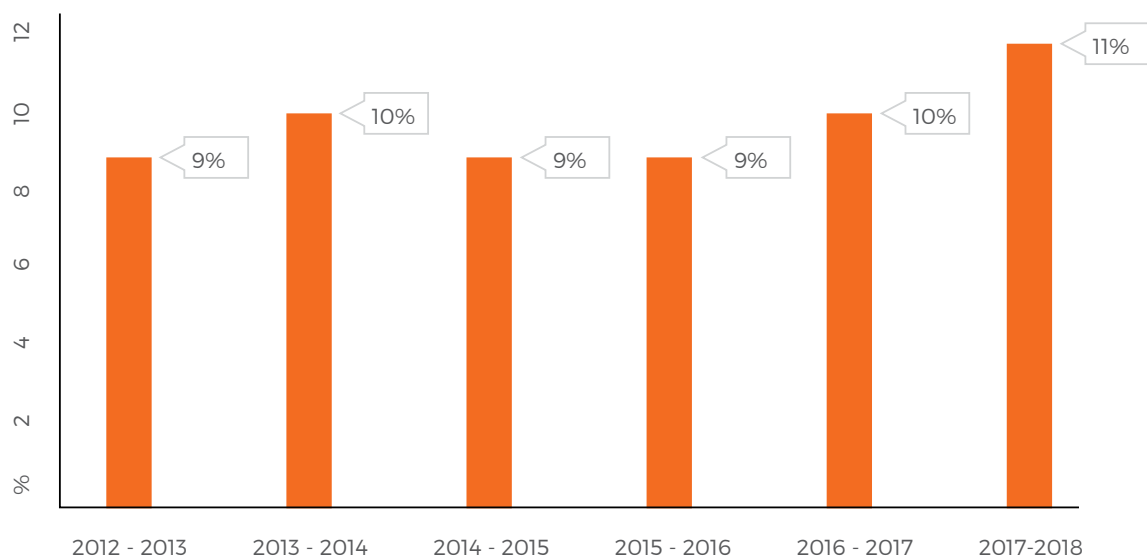
6,292

K-5th grade students were absent 21 or more days.

(Polk County Public Schools)

DID YOU KNOW?

PERCENTAGE OF K-12 STUDENTS WITH 21+ DAYS ABSENT



Shannon Gillespie
Co-Chair
Polk County Public Schools

Janet Lamoureux
Co-Chair
Polk County Council PTA

Brett Butler
Polk County Public Schools

Craig Clevenger
Community Volunteer

Pam Craven, Ph.D.
Learning Resource Center

Kenneth Franklin
Early Learning Coalition of Polk County

Chandra Frederick
Polk County BoCC

Matti Friedt
Polk County Public Schools

Amanda Hall
Polk County Public Schools

Sandy Hightower
Community Volunteer

Brenda Johnson
Community Volunteer

Patty Linder
Polk State College

Jodi Miller
United Way of Central Florida

Mel Rowker
Community Volunteer

Rolanda Sealey
Polk County Public Schools

Neal Steiger
Lakeland North Rotary Club

Christopher Sylvester
Polk County Public Schools

Shandale Terrell
Polk County Public Schools

Peggy Threlkel
Girls Inc. of Winter Haven

Billy Townsend
Polk County School Board





ABOVE: A Forum on Community Partnership Schools™ was held in September 2017 by the Lakeland Chamber of Commerce and hosted by Polk State College at the Lakeland Campus. John Small, then Co-Chair of the Polk Vision Exploring Community Schools Team, provided the School District update.

A Community Partnership School™ EMERGES

Community Schools are characterized by extended services, extended hours and extended relationships that serve not only the students, their families and the teachers, but the community at large. Key program components include after-school and summer enrichment, parent involvement, adult education, financial education, a full-service health clinic with medical, dental and mental health services.

The implementation of a Community Partnership School takes a great deal of thought, planning and commitment to achieve sustainable, long-term success. The Children's Aid Society of New York has identified four Stages of Development in a Community School: Exploring, Emerging, Maturing and Excelling. (University of Central Florida, College of Health and Public Affairs)

EXPLORING

In the Fall of 2016, recognizing widespread interest among leaders across the community, Polk County Public Schools Superintendent, Jackie Byrd, requested that Polk Vision

facilitate the collaborative research necessary to evaluate the potential success of transitioning an existing public school to a community school.

Polk Vision assembled an Exploring Community Schools Team and over a nine-month period a meticulous process was followed to determine which of the 73 Polk County elementary schools had the best chance for success as a community school. The Team's work encompassed factors such as school grades, transportation numbers, free & reduced lunch rates, teacher retention rates, suspensions, expulsions and feeder patterns as well as the locations, building capacity, sidewalks, parking, public transportation, and the potential for expansion.

During a July 2017 work session, the Team submitted its findings to the Polk County School Board and Crystal Lake Elementary was chosen by the Board as the pilot location for the first Community School in Polk County.

EMERGING

Following the School Board's selection, five organizations agreed to make a significant, long-term commitment and chose to adopt the University of Central Florida Community Partnership School™ model. Formed as a Cabinet, Polk County Public Schools, Southeastern University, Central Florida Health Care, Heartland for Children and United Way of Central Florida have each made a 25 year commitment to share in the governance, development, and implementation of services at the school.

Over the past year, a top priority for Cabinet members was securing the financial support necessary to begin transforming Crystal Lake Elementary to a Community Partnership School™. While considerable investment was provided by the Cabinet, additional funding was needed to hire essential staff positions including a Director, Afterschool Coordinator, Health Programs Coordinator and Parent Coordinator. Significant financial support was secured through United Way of Central Florida who also assisted in obtaining major funding from the George Jenkins Family Foundation and the Clark Family Foundation.

Crystal Lake Elementary School is registered with the University of Central Florida and is seeking to become a UCF certified Community Partnership School™. Once a Community Partnership School™ has registered, the school is eligible to receive development assistance and to submit for planning or implementation grants. UCF currently is working with 14 Community School initiatives across the state; each in different stages of development. To ensure consistency in the quality of programming as well as strategy and framework fidelity, UCF has developed a process to certify schools that demonstrate alignment with the UCF Standards.



Vision

Before 2030, Polk County will have a world-class, fully integrated education system that supports the needs of a vibrant, progressive community.



TOP: *Andrea Hagan, who was selected as the Director of the Community Partnership School, is an employee of Heartland for Children and will work closely with School Principal, Kristan Fowler.*

At this time, a community assessment is being performed which will determine the initial program design and range of services. The programs offered at the school will be implemented in phases beginning in the 2018-19 school year and will be based on the needs of the children, families and members of the surrounding community. Polk Vision will continue working directly with the core partners in the alignment of resources to support the students, families and residents of the Crystal Lake community.

MIDDLE: *Principal Kristan Fowler and Polk Vision staff member, Pauline Simmonds-Brown, discuss the Community Partnership School™ model with parents.*

A series of parent engagement events, sponsored in part by a grant from the Lakeland Area Chamber Foundation, were held on the Crystal Lake campus during the Spring of 2018. During these sessions, Team members surveyed attendees and explained how the school will transition to serve as a hub for education, healthcare and social services not only for students and their parents, but also members of the surrounding community.

Information sessions were conducted around the county to raise awareness about the benefits of adopting the Community Partnership School model.

BOTTOM: *Team members, Dr. Ed Shoemaker, Kim Daugherty, Penny Borgia, and Dr. Marc Hutek with ŪthMpact students hosted by Florida Southern College.*



2017 - 2018 CABINET

Teri Saunders
Co-Chair
Heartland for Children

Marc Hutek, Ph.D.
Co-Chair
Polk County Public Schools

Penny Borgia
United Way of Central Florida

Amy Bratten
Southeastern University

Ann Claussen
Central Florida Health Care

Kristan Fowler
Polk County Public Schools

Tracy Grey
Heartland for Children

Andrea Hagan
Heartland for Children

Kim Long
Polk Vision

Rachel Pleasant
Polk County Public Schools

Billy Townsend
Polk County School Board

Angela Usher
Polk County Public Schools





In the Fall of 2017, the Polk Vision Literacy Team completed a Literacy Resource Directory with both English and Spanish versions currently available online.

An expanded second edition of the Resource Directory is currently in development and will be published in Fall 2018. The updated edition will be available on line in English, Spanish and Haitian-Creole.

To view the Literacy Resource Directory, visit
<http://portal.polkvision.com/literacy-team>

Literacy LEAD Team

Aligning with the Strategic Plan of Polk County Public Schools, the goal of the Literacy Team is to increase student literacy proficiency.

Following publication of the Literacy Resource Directory, the Team continued researching the contributing factors to low reading and comprehension scores among school children in Polk County.

Only 44% of Polk County children entering Kindergarten came to school proficient in Language and Literacy Readiness. (2017 Florida Kindergarten Readiness Screening)

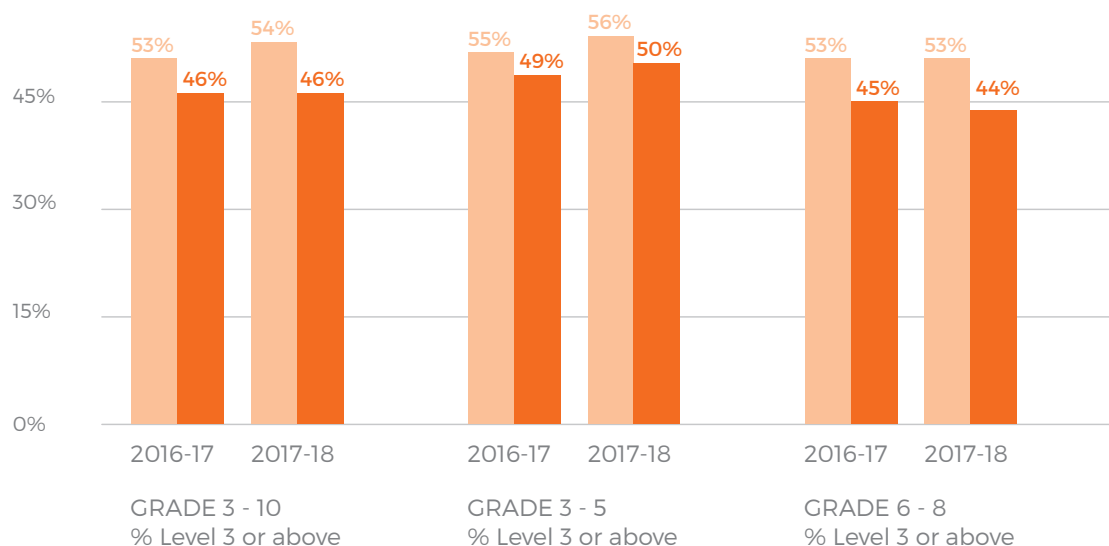
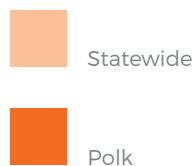
Recognizing the important role adult family members play in a child's literacy development, the Team is considering a variety of tactics intended to assist families in improving their student's performance.

“Family support for . . . literacy is foundational and has a lasting impact on children's success in school” (Boone, 2018, p. 16).

Following this premise, the Team is using several key concepts:

- LITERACY encompasses many activities beyond reading and writing
- To best support children in their learning, FAMILIES need SUPPORT
- Adults who PARTICIPATE in a child's learning, often enhance their own literacy skills

FLORIDA STANDARDS ASSESSMENTS ENGLISH LANGUAGE ARTS (READING & WRITING ASSESSMENT)



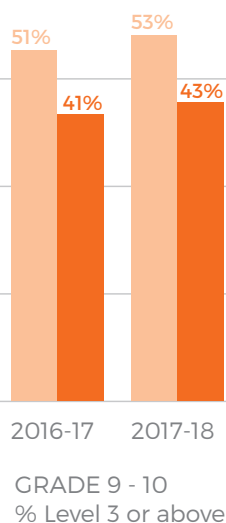


Vision

Before 2030, Polk County will have a world-class, fully integrated education system that supports the needs of a vibrant, progressive community.



ABOVE: A series of meetings are being conducted around the county to learn more about how to better align literacy supports for students and families. These meetings convene experts in a range of educational fields and address a variety of literacy challenges including reading comprehension, finance, and health.



Third grade is an important pivot point in a child's education, the time when students shift from learning to read and begin reading to learn. Students who fail to reach this critical milestone often falter in the later grades and drop out before earning a high school diploma

(Hernandez, 2011)

51%

of Polk County 3rd Grade Students scored proficient in English Language Arts.

(2018 Florida Standards ELA Reading Assessment)

DID YOU KNOW?



Lindsay Persohn, Ph.D. // Senior Coordinator, Library Media Services, Polk County Public Schools

With this broad support for literacy in our communities, in addition to the availability of the Literacy Resource Directory, we look to positively impact test scores as well as the overall success of Polk County's children in school and in life."

Pam Craven, Ph.D.
Co-Chair
Learning Resource Center

Lindsay Persohn, Ph.D.
Co-Chair
Polk County Public Schools

Jeanette Crowley
Polk County Public Schools

Jennifer Kovac
Polk County Library Cooperative

Kristi Perkins
Lake Wales Literacy Council

Colleen Pizzuti
United Way of Central Florida

Nancy Puri
Polk County Public Schools

Beverly Putnam
Northeast Polk Literacy Council

Sandy Roddenberry
Lakeland Regional Health

Kathleen Roehm
Redlands Christian Migrant Association

Claire Schwartz
Achievement Academy

Juan Seda
Polk County Public Schools

Billy Townsend
Polk County School Board





ABOVE: Dr. Naomi Boyer of Polk State College with Dr. Neslon Marquez of Webber International University, conducted a series of Think Tank sessions across the county on the topic of Employability Skills.



ABOVE: Information gathered during these sessions will be used to design an employability skills program for students in high school and beyond to better prepare local students for entry into the workplace.



ABOVE: The Team is aligning resources between business, education, philanthropy and government and is focused on helping students achieve success beyond high school.

Talent Pipeline LEAD Team

The Talent Pipeline Team was formed cooperatively by Polk Vision in partnership with the Central Florida Development Council and is focused on filling the gap of high skill, high wage jobs necessary to meet Polk County's current and emerging industry workforce needs.

The Polk County economy requires a pipeline of qualified workers to meet the demands of local employers. This pipeline is highly dependent upon high school graduation, post-secondary enrollment and college completion rates.

The plan is to increase educational attainment - substantially altering local conditions, improving quality of life and serving as an economic catalyst for increased productivity.

Goals for the Team include increasing the number of students who graduate high school with a diploma and a direct pathway to a career or post-secondary education. This will provide a more robust pipeline of talent and skills and reduce the existing gap of employable individuals in particular jobs and sectors. Outcomes are measured by the number of high school graduates who then enter college or technical school; or directly enter the skilled workforce; or elect to enter the military.

POLK VISION JOINS FCAN

The Florida College Access Network (FCAN) is Florida's first collaborative network



Vision

Before 2030, Polk County will have a world-class, fully integrated education system that supports the needs of a vibrant, progressive community.

committed to ensuring all Floridians have the opportunity to achieve an education beyond high school and prosper in Florida's dynamic economy. Their mission is to create and sustain a statewide network of communities to increase college and career preparation, access, and completion for all Florida students. They have established a Florida Goal 2025: For 60% of working-age Floridians to hold a high-quality postsecondary degree or credential by the year 2025.

Polk Vision joined the statewide network as the representative organization serving Polk County recognizing that FCAN's guiding values align with the work of our Education Teams:

- **College is postsecondary education.** FCAN uses the term "college" to refer to the attainment of high-quality postsecondary credentials beyond high school, including technical certificates and academic degrees.
- **College readiness is career readiness.** All Florida students deserve to receive a high-quality PreK-12 education, which prepares them academically for success in college or a career.
- **College is for everyone.** All Florida students deserve the opportunity to pursue a high-quality postsecondary education that prepares them to effectively participate in the 21st century knowledge-based global economy.
- **College is a public good.** Postsecondary educational opportunity and attainment are critical to a just and equitable society, strong democracy, robust economy, and healthy communities.

The Talent Pipeline Team coordinates partnerships between post-secondary advisors, and high school career/college advisors. These collaborations include the goal of increasing the number of Free Application for Federal Student Aid (FAFSA) completions in Polk County.

For the coming year the Team has determined its work to include:

1. Advise and support the Local College Access Network in the development of a strategic plan aimed at creating a pipeline of well trained, skilled, and credentialed individuals prepared to meet current and emerging industry needs. The plan will encompass both high school to post-secondary as well as students who may have previously stopped out of a program.
2. Finalize research on the employability skills gap and create and pilot a program in response to the stated needs of local industry.
3. Convene industry specific forums, in conjunction with Central Florida Development Council, and area Chambers to gather information and engage businesses in the talent pipeline dialogue.

Naomi Boyer, Ph.D.
Co-Chair
Polk State College

Alaina Johnson
Co-Chair
Lakeland Regional Health

Melony Bell
Polk County BoCC

Alan Black
McKeel Academy

Penny Borgia
United Way of Central Florida

Amy Bratten, Ph.D.
Southeastern University

Sarah Breed
Lakeland Area Chamber of Commerce

Brett Butler
Polk County Public Schools

Monique Byrd
Polk County Public Schools

Stacy Campbell-Domineck
Career Source Polk

Carly Evans
Keiser University

Kyle Fedler
Florida Southern College

Barbara Hammock
Community Volunteer

Myron A. Harvey, Ph. D.
Human Capital Consulting

Marc Hutek, Ph. D.
Polk County Public Schools

Jesse Jackson, Ph.D.
Lake Wales Charter District

Betsy Livingston
Community Volunteer

Larry Madrid
Madrid Engineering Group

Sean Malott
Central Florida Development Council

Lori Martini
GiveWell Community Foundation

Nelson Marquez
Webber International University

Cindy McCalla
City of Lakeland

Phil Minden
Bartow Regional Medical Center

Devyn Montalvo
Webber International University

Laquiera Nottage
Polk County Public Schools

Brooke Paquette
Saint Leo University

Trish Pfeiffer
City of Bartow

Nilda Soto
Polk County Public Schools

India Sukhraj
Florida Polytechnic University

Chad Tagtow
Citizens Bank & Trust

Paizley Whidden
Warner University

Lynn Wilson
Polk County School Board

Lindsay Zimmerman
Central Florida Development Council



3.6% INCREASE

in High School Graduation Rate.

POLK: 75.4% for the 2016-2017 School Year.

STATE: 82.3% for the 2016 - 2017 School Year.

(2016-17 Florida Department of Education (FDOE) cohort graduation data as of 12/18/17)

4.7% INCREASE

in FAFSA completions March 31, 2018 compared to March 31, 2017. Polk County Public Schools was awarded Most Improved Large School District in the State by Florida College Access Network.

(Florida College Access Network FAFSA Challenge)

1% INCREASE

in educational credential attainment since 2012 for residents age 25-34 with associates degree or higher.

POLK: 26.8% in 2012 to 27.8% in 2015

STATE: 37.9% in 2012 to 40.7% in 2015.

(FCAN - Florida College Access Network - Goal 2025 Report July 2017)

Polk students have earned an estimated **\$5,834,395 in Pell Grants!**

(Florida College Access Network Data Dashboard October 2017 through June 2018)



2016-17 SCHOOL YEAR

12th Graders: **6,623**

FAFSAs Submitted: **3,142**

FAFSAs Completed: **2,773**



2017-18 SCHOOL YEAR

12th Graders: **7,092**

FAFSAs Submitted: **3,533**

FAFSAs Completed: **3,183**

CHANGE

FAFSA Completion Rate: **3.1%**

FAFSAs Submitted: **391**

FAFSAs Completed: **410**

The work of the Talent Pipeline Team as the Local College Access Network for Polk County is funded by:

Higher Education Coordinating Council for the Attainment Innovation Partnership Award

College Access and Success Initiative, a program of the Florida Philanthropic Network, made possible through funding from the Helios Education Foundation and the Kresge Foundation and administered through the CASI Challenge Fund within the GiveWell Community Foundation

Helios-Florida College Access LCAN seed grant

George W. Jenkins Fund within the GiveWell Community Foundation

City of Lakeland Florida Community Services Grant Funds



INFRASTRUCTURE



We need a comprehensive focus on infrastructure that supports not just transportation but also broadband, education, healthcare, and our environment.” — John Wright Hickenlooper Jr. is an American

politician, businessman and the 42nd and current Governor of Colorado, in office since 2011.



LEFT: Children deserve safe places to walk — starting with the trip to school. Walking is one of the easiest ways for kids to get the recommended allotment of physical exercise and contributes to both physical well being and increases cognitive learning. By starting with children and their trip to school, communities become safe places for everyone to walk.

Infrastructure LEAD Team

The Infrastructure Team continues in partnership with the Polk Transportation Planning Organization (TPO) to evaluate the need for sidewalks within a one mile radius of public schools (the area where most walkers converge on a school).

The Infrastructure Team and TPO are now concentrating on those schools with the worst sidewalk coverage. Using a range of established criteria as “high need,” they have evaluated and identified priority sidewalk projects.

PRIORITY SIDEWALK PROJECTS

Candidate projects are being referred to State, County and local jurisdictions for funding. The Infrastructure Team together with staff from the TPO are identifying highest priority, or top projects, based on factors such as connectivity, likely available right-of-way, and potential to serve greatest number of students. The future of priority projects is subject to funding availability and engineering-level feasibility analysis (review of right-of-way, drainage and potential utility relocation issues).

15 Priority Sidewalk Projects (from Phase I list) with an estimated cost of **\$3.1 Million** have been referred to the Polk County Sidewalk Advisory Committee for review and consideration for funding.

SIDEWALK COVERAGE ANALYSIS

140 Public Schools

639 centerline miles of arterial and collector roads **within one mile of Public Schools**

179 miles (28%) do not have a sidewalk on either side of the road

(Geographic Information System – GIS – analysis of major road network within one mile of schools)



ABOVE: Ryan Kordek presents the sidewalk segments for Medulla Elementary to the Polk County Sidewalk Advisory Committee on July 10, 2018.



Vision

Before 2030, Polk County will have growth management and infrastructure that protect the environment, enhance quality of life, promote education and economic development, and are economically sustainable.

CANDIDATE SIDEWALK PROJECTS

Phase I – 10 Public Schools

59 Candidate Sidewalk Projects (**23 miles**) with an estimated cost of **\$8.7 Million**

Phase II – 20 Public Schools

82 Candidate Sidewalk Projects (**35 miles**) with an estimated cost of **\$13.1 Million**

(More detailed analysis used to identify candidate sidewalk projects, e.g., fill in network gaps)

The Sidewalk Advisory Committee evaluates new sidewalk needs throughout Polk County and prioritizes projects for funding that are recommended to the Board of County Commissioners as part of the annual budgeting process.

Sidewalk Advisory Committee meetings are held the first Tuesday of each month beginning in January and continue until the prioritized list of new sidewalk projects is finalized for submission to the Board prior to the annual budget hearings in September.

The Sidewalk Advisory Committee includes five public members appointed by the Polk County Board of County Commissioners; as well as four Roads & Drainage Division staff, and one representative each from the Polk Transportation Planning Organization (TPO), the Polk County School Board, and the Polk County Sheriff's Office.

Visit <https://www.polk-county.net/boards-and-committees/sidewalk-advisory> for more information.

John Bohde
Chair
Polk County BoCC

Chuck Barmby
City of Lakeland

Julia Davis
Polk TPO

Tom Deardorff
Polk County BoCC &
Polk TPO

Tracy Garcia
Visit Central Florida

Lauren Hinton
Florida Department of
Health in Polk County

Ryan Kordek
Polk TPO

Eric Labbe
City of Winter Haven

Jason Lewis
Kimley-Horn

Pam Luce
Polk County Public
Schools

Tracy Mullins
Polk Parks & Natural
Resources Division

Nick Nicholas
DSM

Jeff Schmucker
Central Florida
Regional Planning
Council

Steven Shealey
Envisors, a Pennoni
Company

Kimberly Warren
Rummel Klepper &
Kahl



DID YOU KNOW?

John Bohde // Director, Land Development Division, Polk County BoCC



The Infrastructure Team continues to make great strides in promoting improvements to the network of sidewalks within a one mile radius of Polk County Public Schools. We know that increasing sidewalk coverage will have an overall positive effect on the health and academic achievement for students, as well as improve the safety for all of our citizens."



ABOVE: This past year, the Team expanded its work to include the identification of the links necessary to create a connected, multi-jurisdictional municipal system and the adoption of technology to facilitate data driven decision making and problem-solving efforts.



ABOVE: On January 25, 2018 the Smart Communities Team launched the first in a series of topical presentations. Partnering with both Winter Haven Economic Development Council and Chamber of Commerce, *The Future of Infrastructure* was held at the Polk State College, Center for Public Safety and featured Anthony Bartolomeo, President & CEO of Pennoni who discussed how strategically incorporating technology into infrastructure investments is critical to achieving reduced life-cycle costs and close the nation's infrastructure deficit.

DID YOU KNOW?

Polk County ranks among the **bottom 25** in the nation for high-speed internet use (358th of 381.) (American Community Survey, 2013)

Bottom 10 in the nation for STEM jobs (91st of 100.) (WalletHub, 2014)

Bottom 10 in the nation for households with broadband subscriptions (94th of 100.) (Brookings, 2014)

SMART Communities LEAD Team

The traditional work of the Smart Communities Team has been to educate and build community consensus around the vital importance of a robust broadband network in Polk County.

2017-2018 HIGHLIGHTS:

- A partnership between the City of Lakeland and the Polk County Public School District to connect more than 40 schools in the Lakeland area to high-speed fiber with 1 Gig service.
- The City of Haines City is working with the Polk County Public School District to provide 1 Gig service to their schools.
- Unprecedented collaboration and coordination with Florida Department of Transportation District One with respect to dig once policy and fiber installation along State roadways.
- Resolutions adopted by the county and 6 municipalities supporting the broadband and smart technology efforts of the Smart Communities LEAD team.
- Supported the commission of a Smart Communities assessment of the City of Winter Haven conducted by students from Florida Polytechnic University.

Eric Labbe // Planning Manager, City of Winter Haven



A smart community is one that not only encourages and facilitates the development of essential 21st Century infrastructure, but actively seeks to utilize that technology in innovative ways to improve the quality of life of its residents and guests."



Vision

All of Polk County will have the fastest, most affordable and most accessible high-speed internet services possible by 2030.



TOP: Panelists L to R: Dr. Tina Barrios, CIO, Polk County Public Schools; Terry Brigman, CIO, City of Lakeland; Don Selvage, Commissioner, City of Lakeland; Hiep Nguyen, CIO, City of Winter Haven; Eric Labbe Planning Manager, City of Winter Haven.

On February 28, 2018, the Smart Communities Team working with the Leadership Polk Alumni Association presented **Addressing the Digital Divide**. Hosted by Polk State College, Winter Haven Campus, the Lunch n' Learn event was attended by Alumni and members of the community.

BOTTOM: Mr. Bartolomeo with Florida Polytechnic University students who working with the Winter Haven Economic Development Council conducted a Smart Communities assessment of the City of Winter Haven.



Terry Brigman
Co-Chair
City of Lakeland

Eric Labbe
Co-Chair
City of Winter Haven

Tina Barrios, Ph.D.
Polk County Public Schools

Naomi Boyer, Ph.D.
Polk State College

William DeWitt
Polk State College

Ercan Elibol
Florida Polytechnic University

Doug Lewis
Polk County BoCC

Hiep Nguyen
City of Winter Haven

Nick Nicholas
DSM

David Robinson
DSM

Brian Ross
City of Haines City

Don Selvage
SHR Human Resources, LLC

Marybeth Soderstrom
Central Florida Regional Planning Council

Chad Tagtow
Citizens Bank & Trust

William Twyford
City of Winter Haven

Lynn Wilson
Polk County School Board

Ed Wolf
Polk County BoCC

Tina Barrios, Ph.D. // Assistant Superintendent, Information Systems & Technology Division, Polk County Public Schools



The Smart Communities Team has provided great value to Polk County Public Schools. Developing a shared vision for not only connecting communities but emphasizing the importance of connectivity for our schools has been a driving force for the past 3 years. Over the past 16 months in collaboration with the City of Lakeland, the school district has been able to bring high speed network access to 49 sites in the Lakeland area and show an annual savings of \$90,000. This increased bandwidth also enabled the district to install a new phone system in each of these sites providing a phone in every classroom."



Mary Crowe, Ph.D.
Co-Chair
Florida Southern
College

Tom Deardorff
Co-Chair
Polk County BoCC,
Polk TPO

Chuck Barmby
City of Lakeland

John Bohde
Polk County BoCC

Deborah Chesna
Florida DOT

Julia Davis
Polk TPO

Diana Degroot
Lakeland Regional
Health

Ryan Kordek
Polk TPO

Pam Luce
Polk County Public
Schools

Jane Nelson
Florida Department of
Health in Polk County

Jerry Rodriguez
Polk County Public
Schools

Bill Skelton
Polk County BoCC

Lisa Smelser
Polk State College

Randy Tagliarini
Bartow Police
Department

Julie Townsend
Lakeland Downtown
Development
Authority

Ed Trail
City of Haines City

Todd Vargo
City of Lakeland

Nelson Vega
City of Haines City

Rachelle Webb
All Children's Hospital
Safe Routes to School

Kathleen Wright
Polk County Public
Schools

Pedestrian & Bicycle Safety LEAD Team

The Pedestrian and Bicycle Safety Team continues to partner with the Polk Transportation Planning Organization (TPO) to improve travel conditions for our most vulnerable road users. The Safety Team has developed and is implementing a tactical plan that includes engineering, education and enforcement countermeasures to address prevalent types of crashes.

ENGINEERING – The Team participated in four roadway safety audits to identify short-term, mid-term, and long-term road improvements in high crash corridors.

EDUCATION – The Team identified the need to allocate more resources to safety education. As a result of the team's efforts, the Florida Department of Transportation has programmed \$200,000 in FY 2018/19 to develop supplemental safe routes to school education material geared towards K-8 students. The Team will guide this effort which is set to coincide with a "Be Seen Be Safe" public awareness campaign.

ENFORCEMENT – The Team is coordinating with local law enforcement agencies to target speed enforcement near public schools with an emphasis on Polk Vision's healthy schools.

DID YOU KNOW?

Every year there are more than **65** pedestrian and bicycle fatalities and serious injuries in Polk County.

(Pedestrian Safety Action Plan)



Vision

Polk County will have a Quality of Life that encourages diverse backgrounds to live in harmony while developing physically, spiritually, mentally, and culturally, within a healthy and safe environment.



ABOVE: Members of Polk Vision's Pedestrian & Bicycle Safety Team, along with other interested parties attended a pre-audit field review briefing on September 27, 2017 as part of the RSA for the Ariana Street from Wabash Avenue to SR 37/Florida Avenue corridor. (Photo Credit: Julia Davis, Polk TPO)



ABOVE: Polk Vision is a founding sponsor of the Pledge to Slow Down Campaign. During the past year, PGTV published five videos highlighting the need for drivers to slow down. Staff has made numerous presentations to stakeholders and community service groups and over 700 people have taken the Pledge to Slow Down.





ABOVE: The Quality of Life Team working collaboratively with the Rath Senior Connexions and Education Center, presented a forum in March, 2018, focused on senior behavioral health, *Living with Purpose*.



LEFT: Featured Guest Speaker Bill Mutz, Mayor, City of Lakeland provided insight on living with purpose and managing time intentionally.

Quality of Life LEAD Team

The Quality of Life LEAD Team is comprised of representatives from across Polk County including non-profits, government, health care, education and faith-based organizations. This diversity affords the opportunity to obtain different perspectives as the Team strategizes on ways to conduct inter-active education forums on various topics impacting the quality of life of Polk County citizens.

Over the past 18 months, the Team has been focused on holding a series of community information sessions on the topic of behavioral health – which is a huge and complex undertaking. However, by starting the conversation, the Team's goal was to demystify the complexities that are often associated with mental health, enhance understanding, and provide information on accessing resources in Polk County.

In March 2018, the Quality of Life team concluded its series of interactive forums on Behavioral Health with a session focused on Seniors. Challenges associated with growing old, such as loss of a spouse, loss of mobility and independence, and declining physical health can lead to problems with mental health for seniors. Staying physically healthy, socially active, and mentally engaged as you age are keys to boosting senior mental health.

27.2%

of Polk County Children (18 and under) Live in Poverty.

(US Bureau of the Census, American Community Survey, 2016)

17.7%

of Polk County Residents Live in Poverty.

(US Bureau of the Census, American Community Survey, 2016)

OVER 4200

Polk County Public Schools' Students Experienced Homelessness During the 2017- 2018 School Year.

(Polk County Public Schools)



Vision

Polk County will have a Quality of Life that encourages diverse backgrounds to live in harmony while developing physically, spiritually, mentally, and culturally, within a healthy and safe environment.

The term “quality of life” has meaning for nearly everyone and every academic discipline, individuals and groups may define it differently. Although health is one of the important domains of overall quality of life, there are many other aspects — jobs, housing, schools, and built environments. Intangibles such as culture, values, and spirituality are also key domains of overall quality of life that add to the complexity of its definition.

In May 2018, the Quality of Life Team co-presented a half-day, immersive poverty simulation together with Leadership Polk, UF/IFAS, and Lake Wales Care Center. Featuring the Polk County Public Schools HEARTH Project, over 100 leaders from across Polk County experienced a profoundly moving inter-active simulation of the challenges facing a person living in poverty.



TOP: Participants of the Poverty Simulation used Big Dave's Pawn Shop as a refuge of last resort to meet the financial needs of their families.

BOTTOM: The Quick Cash table was a frequent stop for attendees as it sold transportation passes and provided check cashing services for those individuals that did not have bank accounts.

Marcia Andresen
Chair
Polk County BoCC

Steve Bissonnette
VISTE

Gail Bagley
RATH Connexions
Center

Penny Borgia
United Way of Central
Florida

Taylor Freeman
Florida Department of
Health in Polk County

Dr. Daniel O. Haight
Lakeland Regional
Health

Cathy Hatch
Polk County BoCC

Myron A. Harvey, Ph.D.
Human Capital
Consulting

Susan Hurlburt
Community Volunteer

Joy Johnson
Polk County BoCC

Rosemarie Lamm, Ph. D.
RATH Connexions
Center

Tim Mitchell
Parker Street
Ministries

Andrea Nikolai
University of Florida/
IFAS

Steve Thompson
American Red Cross

Nicole Walker
University of Florida/
IFAS



Marcia Andresen // Director, Health and Human Services
Division, Polk County BoCC



Quality of life really encompasses many aspects both for individuals and for the community as a whole. Our Team targets these various areas striving to provide education, understanding, and information on pathways to support."

BUILDING A HEALTHIER POLK

Changing the health landscape of Polk County. **TOGETHER.**

With obesity directly linked to chronic diseases such as heart disease, stroke and diabetes which are major causes of death and preventable hospital stays, the startling statistic galvanized a movement among stakeholders across Polk County. Working cooperatively with the Florida Department of Health, Polk Vision convened a large cross-sector group of subject matter experts to prioritize objectives in addressing the alarming rate of obesity in our community. This group came to be known as Building a Healthier Polk and has been working to develop healthy habits and behaviors in key settings across our community.

Currently, three Building a Healthier Polk Teams are built on objectives targeting School Health, Primary Care Physicians, and Worksite Wellness.

The importance of having each of these Teams focused on promoting a united message cannot be overstated. Common language and central communication is essential to keeping these cross-sector professionals aligned as they work towards the long-term goal of improving the healthy weight rate in our community.

Reducing obesity rates and increasing the healthy weight rate of our citizens is a long-term effort. The Building a Healthier Polk Teams are committed to reducing the obesity (BMI >30) rate in Polk County to less than the state average (36.9% to 26.4% in 2013). The Florida Department of Health in Polk County includes the work of these Teams into its 2016-2020 Community Health Improvement Plan.

Dr. Joy Jackson // Director of the Florida Department of Health in Polk County



Every person should have the opportunity to make choices that allow them to live a long, healthy life. We are proud to partner with Polk Vision - an organization that addresses health equity through the work of all its Teams."

Worksite Wellness LEAD Team



Vision

Reduce the Obesity rate (BMI>30) in Polk County to less than the state average (from 36.9 percent to 26.4percent).

Committed to advancing a culture of health across Polk County, the Worksite Wellness LEAD Team provides education and support in the development and enhancement of wellness programs to businesses in our community.

The Team has launched a series of listening sessions with local business leaders and HR professionals to learn more about the challenges businesses face when implementing wellness programs. Partnering with area Chambers of Commerce, this series of group discussions will continue to be held in communities across the county throughout Fall 2018. Information learned from these sessions will guide the future plans of the Team as they expand and promote a culture of health and wellness in the workplace.



ABOVE: On January 25, 2018, the Team presented a session at the CareerSource Polk "State of the Workforce Summit" entitled *The "Truth" About Corporate Wellness – Does it Really Make a Difference?*



ABOVE: Hosted at the Lakeland Regional Health Promise Center, Lakeland Chamber of Commerce members participated in a focused discussion on health in the workplace.

Lacey Meyer // Business Manager, The Lunz Group

The Worksite Wellness focus group gave me an opportunity to meet other businesses and learn about their wellness initiatives. It was great to hear the experiences of others and realize the community as a whole is working towards the same goal: wellness. I am excited to be joining the Worksite Wellness Team and can't wait to see how we can make a difference not only in our own workplaces but within the community."

30

Jeffery Epstein
Peak Annual Wellness Center

Donna Kay Dinkins
Medics on Demand

Abigail Elias
Florida Southern College

Yvette Guzman
BayCare Health System

Dr. Daniel Haight
Lakeland Regional Health

Schatzie Haines
Lanier Upshaw

Rebecca Harner
Polk County Public Schools

Kay Kasser
Alive Culinary Coaching

Susan Kistler
Community Volunteer

Jenna Levine
Florida Department of Health in Polk County

Brittany Lynn
BayCare Health System

Colleen Mangan
Florida Department of Health in Polk County

Joshua Maxwell
OMS Group Inc.

Leah Millette
BayCare Health System

Karen Moore
Peace River Center

Andrea Nikolai
University of Florida/IFAS

Laurel Smith
Polk State College

Sara Terrell
Florida Southern College

Jason Weiland
Navigate

Marie Wilmot
Florida Polytechnic University

Debbie Zimmerman
Polk County Public Schools

Kelly Andrews
Co-Chair
Kelly Andrews, LLC

Liz Antaya
Co-Chair
Stahl & Associates Insurance

Carla Adock
Polk County Public Schools

Susan Alfano
Citrus Connection

AnnMarie Ameri
City of Lakeland

Sarah Betzer
Bank of Central Florida

Bethany Brown
Lakeland Regional Health

Julie Davis
Florida Department of Health in Polk County

Jazmine Dicristo
Polk County Public Schools



Primary Care LEAD Team

YEAR ONE SUCCESSES:

A total of **40 pediatric providers**, including pediatricians and pediatric ARNPs participated, representing **5 practices** and **12 locations** across Polk County.

A total of **2,236 prescriptions** were disseminated and **3,999 goals** were selected by patients.

We would especially like to recognize the two practices who disseminated over 97% of the prescriptions (2,179 prescriptions):

- **Central Florida Health Care** (1,016 prescriptions)
- **Lakeside Pediatrics** (1,163 prescriptions)

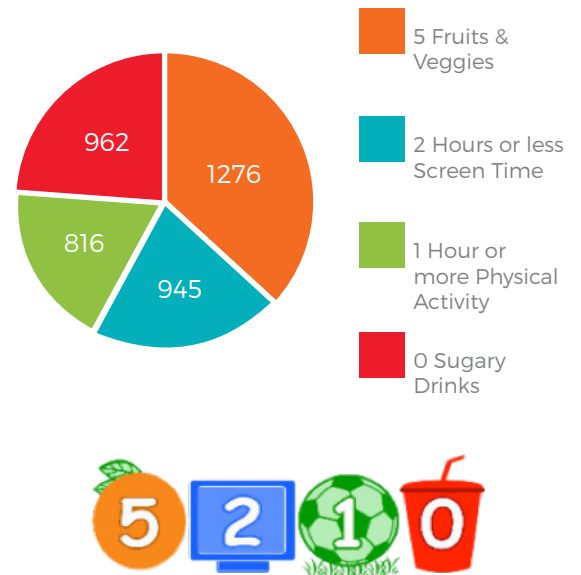
The most popular goal selected was eating 5 servings of fruits and vegetables each day.

- This goal was selected 1276 times.

The least popular goal selected was getting 1 hour or more of physical activity.

- This goal was selected 816 times.

The Primary Care LEAD Team has been addressing the prevention and reduction of childhood obesity using the 5-2-1-0 prescription program. This program provides simple steps children can take to achieve and maintain a healthy weight by developing healthier habits that will last a lifetime. The program launched in January of 2017 and has gained such momentum that the Team extended their plans through 2018.



Suzanne Wright // Nutrition Director, Florida Department of Health in Polk County



The 5-2-1-0 Prescription for Healthy Living is an excellent tool to initiate conversations about healthy habits. This campaign is not limited by age and has been shared with many Polk Vision Teams and utilized by Polk County Head Start, Polk County Public Schools both in the curriculum and food service, Primary Care Providers, Florida Southern Nursing Program, and the Special Supplemental Nutrition Program for Women, Infants and Children, (WIC). 5-2-1-0 is a positive healthy message that can be conveyed throughout our county."



Vision

Reduce the Obesity rate (BMI>30) in Polk County to less than the state average (from 36.9 percent to 26.4percent).

ANNOUNCING 5-2-1-0 PARTNERSHIP WITH FLORIDA SOUTHERN COLLEGE

New in 2018 is the partnership with the Florida Southern College School of Nursing and Health Sciences. Nurse practitioner students will be instructed in the use and benefits of the 5-2-1-0 prescription tool. Students will then be given the opportunity to utilize the tool with pediatric patients during practicum rotations as well as introduce use of the prescription strategy to pediatric providers with whom they do their clinical rotations.



Deborah Cantero, DNP, ARNP, FNP-C, FNP // Program Coordinator, Assistant Professor, School of Nursing and Health Sciences, Florida Southern College

The incorporation of the 5-2-1-0 content and tool within our graduate nurse practitioner program will allow an exclusive opportunity for the nurse practitioner students to expand their knowledge on the important topics of childhood wellness, nutrition and obesity. Additionally, the implementation of the 5-2-1-0 tool within the student's clinical practicum will strengthen the focus on disease prevention and health promotion in the clinical setting, allowing for a greater impact on pediatric patient health outcomes. We are very excited to be partnering with Polk Vision on this innovative project."

Holly Vida

Co-Chair
Bartow Regional
Medical Center

Suzanne Wright

Co-Chair
Florida Department of
Health in Polk County

Karen Bessinger

Lakeland Regional
Health

Penny Borgia

United Way of Central
Florida

Beverley Brown

Florida Southern
College

Deb Cantero

Florida Southern
College

Ermelinda Centeno

Central Florida Health
Care

Dr. Sairah Chachad

Lakeside Pediatrics

Linda Comer

Florida Southern
College

Cecelia Coronado

Lakeland Regional
Health

Dr. Joy Jackson

Florida Department of
Health in Polk County

Jenna Levine

Florida Department of
Health in Polk County

Colleen Mangan

Florida Department of
Health in Polk County

Paula McGhee

Polk County BoCC

Andrea Nikolai

University of Florida/
IFAS

Xiomara Rivera

Amerigroup

Nora Smith

Pediatric Partners of
Winter Haven





Jenna Kaczmariski
Co-Chair
Polk County Public
Schools

Kathleen Wright
Co-Chair
Polk County Public
Schools

Karen Bessinger
Lakeland Regional
Health

Julia Davis
Polk TPO

Mindi Fitch
City of Lakeland

Audrey Kelley
Polk County Public
Schools

Deanna Kirkland
Florida Department of
Health in Polk County

Ileana Kniss
Peace River Center

Jenna Levine
Florida Department of
Health in Polk County

Colleen Mangan
Florida Department of
Health in Polk County

Andrea Nikolai
University of Florida/
IFAS

Jennifer Rouse
Polk County Public
Schools

Deidre Skaggs
Polk County Public
Schools

Rachelle Webb
All Children's Hospital,
Safe Routes to School

1 IN 3

children are
overweight or
obese. Only 1 out of
every 3 children are
physically active
every day. Only 1
in 2 children eat
enough daily fruits
and vegetable.

(Alliance For A
Healthier Generation)

School Health LEAD Team

A Healthy Schools pilot program was launched in five Polk County Elementary Schools during the 2017- 2018 school year. The pilot was inspired by a nationally recognized evidence-based model emphasizing the benefits of integrating health and education in the school setting.

With the goal of improving student health and academic achievement, each Healthy School implemented one or more tactics tied to increasing the consumption of nutrient dense foods and/or increasing physical activity.

Children often cannot differentiate between healthy and unhealthy foods. Nutrition education is focused on the importance of eating five servings of fruits and vegetables each day. When young children are exposed to lessons and activities that focus on eating fruits and vegetables, their intake of these nutritious foods increases significantly.

Graphic inspired by the Action for Healthy Kids' 2004 report. The Learning Connection: The Value of Improving Nutrition and Physical Activity in Our Schools.

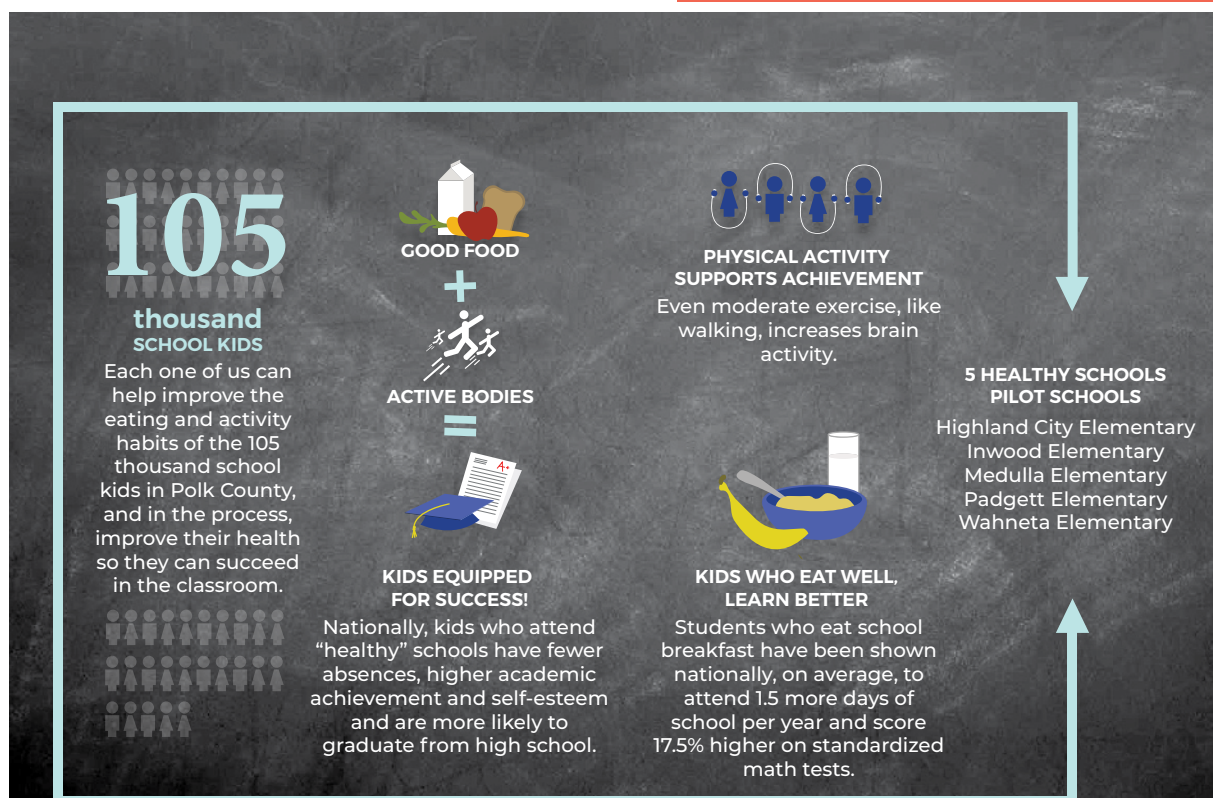


Vision

Reduce the Obesity rate (BMI>30) in Polk County to less than the state average (from 36.9 percent to 26.4percent).



ABOVE: Pre-K students at Medulla Elementary learning about the school's garden.





civil servants **DISCUSSION**

GOVERNMENT

PEOPLE **rights** POLK
CITIZENS

CITY(IES) village

STAKEHOLDERS PUBLIC TOWN(S)
POLICY

SYSTEMS regulation **REPRESENTATIVES**

elected officials society

17 MUNICIPALITIES

1 COUNTY
open



LEFT: On September 6, 2017 the 7th Annual Mayors Roundtable was hosted by Polk State College at the Center for Public Safety.

Government Advisory Team

The Government Advisory Team serves to bring together all levels of local government to create more awareness, cooperation and support of Polk Vision and the initiatives of its LEAD Teams. This includes providing review and guidance on both foreseen and unforeseen opportunities that intersect with a strategy or tactic impacting the potential success of a goal established by a Polk Vision LEAD Team.

The Government Team also works to effectively engage citizens by producing a series of educational offerings each year such as the Mayors Roundtable, State of the County, Elected Leadership Summit, and legislative workshops.

MAYORS ROUNDTABLE

For the 7th year in a row, the Polk Vision Government Team hosted a half-day roundtable for the Mayors of Polk County. This unique event allows the mayors to discuss topics critical to their communities and the county as a whole.

Mayors from 11 of the county's 17 municipalities and Board of County Commissioners, Chair, Melony Bell, participated in this year's event which was moderated by Emily Rogers, of Emily Rogers Consulting and Coaching

Topics of discussion included the consequences of rapid population growth on infrastructure including roads and transportation, water usage and conservation, and the potential impact of legislative changes to the homestead exemption. Emergency services and storm preparedness were also discussed as Hurricane Irma was tracking to impact Polk County.

LEGISLATIVE WARMUP

The Legislative Warm-Up included an overview of the legislative process, together with a conversation regarding best practices for how citizens can most effectively engage their legislators. Discussion also included important issues likely to be addressed during the 2018 Legislative Session.



TOP: On November 3, 2017 renowned author, political scientist, and University of South Florida professor Dr. Susan MacManus, moderated a panel discussion with members of the Polk County Legislative Delegation.

Hosted by Lakeland Regional Health/ Hollis Cancer Center, in attendance were Florida House Representatives Ben Albritton – District 56, Colleen Burton – District 40, and Neil Combee – District 39, and Senator Kelly Stargel - District 22.



Vision

Before 2030, Polk County will have a comprehensive system of government that is effective, efficient, diverse and responsive to the basic needs of its citizens.



TOP: Commissioner Dantzler updated the audience on Polk's rapid population growth, investments in economic development, and the role of tourism to our local economy.

BOTTOM: Event host, Polk County Sheriff Grady Judd, assisted Commissioner Dantzler and Mr. Freeman by answering several questions posed by audience members.

2018 STATE OF THE COUNTY UPDATE

Held on April 25, 2018, the State of the County Update brought together residents from across Polk County to hear from Board of County Commission Chair, Todd Dantzler, and County Manager, Jim Freeman. Topics addressed included the impact and after effects of Hurricane Irma, investments in infrastructure, traffic congestion (particularly the northern corridor of US Highway 27), roads expansion, public safety and the need to increase capacity in order to keep pace with a growing population.

Matt Mucci
Co-Chair
AT&T

Donna Sheehan
Co-Chair
City of Winter Haven

Melony Bell
Polk County BoCC

Stacy Butterfield
Polk County Clerk of the Courts

Betsy Cleveland
Polk County
Supervisor of Elections
Office

Meagin Colson
Polk County Sheriff's
Office

Susan Copeland
Polk Education
Foundation

Marsha Faux
Polk County Property
Appraiser

Christine Goding
Community Volunteer

Gwinnell Jarvis
Polk County Sheriff's
Office

Brad Johnson
City of Lakeland

Valeria Jorn
Tri-County Human
Services

Maggie Mariucci
Florida Polytechnic
University

Tracy Mouncey
Tracy Mouncey &
Associates

Michael Spake
Lakeland Regional
Health

Lea Ann Thomas
Polk County BoCC

Stacy Butterfield // Clerk of the Circuit Court and County Comptroller, Polk County



Polk Vision continuously upholds its core principals through the work its members do within the Polk County community, and the Polk Vision Government Team has gone above and beyond to identify underlying issues and bring about systemic change throughout the county. I am thrilled to be involved in efforts to engage the community as a member of the team and have the opportunity to bring together all facets of local government to achieve the team's vision of a diverse, comprehensive governmental system that fulfills the basic needs of Polk County's residents efficiently."



CIVIC ENGAGEMENT

“ A generation that acquires knowledge without ever understanding how that knowledge can benefit the community is a generation that is not learning what it means to be citizens in a democracy.”

— Elizabeth L. Hollander, American Author (1817-1885)



Vision

Before 2030, Polk County will have leadership that drives the partnership with government and citizens to ensure that Polk County is a premiere place to live, learn, work and play

Leadership Polk

As the only countywide leadership development program in Polk County, Leadership Polk is comprised of individuals who have demonstrated a high level of civic engagement in their local community. Started in 2007, the program brings together accomplished leaders from across the county with the goal of developing a diverse network of resourceful, informed and proactive visionaries committed to building a more vibrant future for our county.

Over the course of ten months, the program immerses participants in an inspiring and enlightening curriculum that examines critical issues that impact our region. Leadership Polk is timely, topically relevant, dynamic, and exposes

participants to a broad range of perspectives through site visits, facilitated conversations and experiential learning. Most importantly, lasting relationships are forged with engaged leaders from across Polk County.

HIGHLIGHTS

293 participants have graduated from the program

13 of the 17 municipalities have been represented

30 business categories have been represented

11% of participants represent a diverse group of minority population

44% of program participants have been female



ABOVE: The final Class Day included a Poverty Simulation produced cooperatively by the Polk Vision Quality of Life Team and Polk County Public Schools Hearth Program. The event was opened to include participation from Leadership Polk Alumni together with community and business leaders. This profoundly moving, interactive simulation challenged participants to "walk a month" in the shoes of a person living in poverty.



TOP: History, Agriculture and Tourism Day, found the Class visiting Double B Bar Cattle Ranch.

MIDDLE: Class members sporting Duke Energy hard hats as they tour the Osprey Energy Plant in Auburndale.

BOTTOM: When exploring Northeast Polk, Class XI enjoyed an in-depth tour of Maxi Jet in Dundee.

John Bohde
Chair
Polk County BoCC,
Class VI

Deena Ware
Chair Elect
Town of Dundee,
Class IV

Lori Martini
Immediate Past Chair
GiveWell Community
Foundation,
Class VI

MJ Carnevale
Treasurer
City of Winter Haven,
Class IX

Shawn Sherrouse
Secretary
City of Lakeland,
Class IV

Stephanie Colon
Programs and Events
Chair
Citizens Bank & Trust,
Class VIII

Alan Rayl
Membership Chair
Rayl Engineering and
Surveying, Inc.,
Class IV

Penny Borgia
United Way of Central
Florida,
At Large,
Class II

Stacy Butterfield
Polk County Clerk
of Courts,
At Large,
Class III

Sarah Case
Next Level Planning
& Permitting,
At Large,
Class V

Cari Herrington
All About Aging,
At Large,
Class X

Ed Lunz
The Lunz Group,
At Large,
Class IV

Kim Long
Polk Vision, Executive
Director,
Class I

Leadership Polk Alumni

The Alumni Association is committed to fostering leadership and service that advances the continuing success of Polk Vision for the betterment of the Polk County community.

Alumni members are encouraged to uphold the purpose of Polk Vision and through their actions have a positive impact on the economic health, leadership and quality of life in the community.

WE TRULY BELIEVE:

- The Leadership Polk experience should be the beginning of a journey of intensified awareness, interest, concern, and pride of our communities.
- That membership in the Alumni Association will continue to assist you in advancing your goals and objectives as an investment for professional, civic, and personal development.
- Through relationships with colleagues who share similar involvement, commitment, and passion, Alumni will discover avenues for Polk County to become an even greater place to live, learn, work, and play

The Alumni Association is committed to remaining a strong and relevant resource for its members and to advancing the work of Polk Vision. To this end, the Alumni Steering Committee assembled a group of 20 key stakeholders for an afternoon of reflection and rich conversation. The practical advice, guidance, and insight gained from this session will guide the Alumni Association as it moves forward in fostering deeper relationships and higher levels of engagement within the Association and the broader community.



Vision

Before 2030, Polk County will have leadership that drives the partnership with government and citizens to ensure that Polk County is a premiere place to live, learn, work and play



TOP 2: Alumni Members enjoying an evening of networking at Grove Roots in Winter Haven

MIDDLE: In February, the Alumni Association produced a Lunch n' Learn event on the topic of **Addressing the Digital Divide**. Hosted by Polk State College, the event was well attended by Alumni and members of the community.

BOTTOM: Alumni members joined Leadership Polk Class XI by participating in a poverty simulation on Quality of Life Day in April.

Youth Leadership Polk Inspiring Young Leaders

Youth Leadership Polk was piloted for a second year in the summer of 2018. This student engagement program is designed to instill students with a sense of belonging, support social and emotional development, explore potential careers, and expand their knowledge of Polk County.

ADVISORY COUNCIL

Following a favorable pilot in the summer 2017, Polk Vision convened a group of cross sector leaders to serve as a Council. This group is committed to the development of a comprehensive and sustainable Youth Leadership Polk program. This past year, with expert assistance from Dr. John Diaz and staff from the University of Florida/IFAS, the Council established outcomes, curriculum, key measures and evaluation methods, field trip locations and agendas. The Council is in the process of assessing the results of this year's program and already preparing for Class 3.

Youth Leadership Polk Class II was comprised of 8th through 12th grade students convened in day-long sessions, once a week for seven weeks. The partnership with Girls Inc. of Lakeland and Bartow continued with services extended to students from Winter Haven, Haines City, and Lake Wales through a new partnership with Citrus Center Boys & Girls Club.

Participants learned components of environmental responsibility, government and public policy, history and culture, community health, and public safety while expanding their academic knowledge. Dedicated business leaders from across the county, many of them Leadership Polk graduates, volunteered as guest speakers, facility hosts and curriculum instructors. Instruction was expanded to include Junior Achievement® instruction modules covering essential employability skills such as team work, critical thinking and effective communication.



Vision

Before 2030, Polk County will have leadership that drives the partnership with government and citizens to ensure that Polk County is a premiere place to live, learn, work and play



COLLEGE & CAREER DAY

During a visit to Florida Polytechnic University, students received instruction on the many pathways to career and college. Following a tour of the campus and engaging in a STEM activity, students participated in a "Speed Dating" session with 8 college and university admissions counselors from across Polk County.

THE ENVIRONMENT

The Environmental curriculum introduced students to the importance of land and animal preservation; the ecosystem; water conservation; recycling and waste management.

Students attended facilitated tours at Circle B Bar Reserve, the Wastewater Treatment Plant, and the Polk County Landfill.



**2017 - 2018
ADVISORY
COMMITTEE**

Michael Borders
Mulberry Boys and
Girls Club

Penny Borgia*
United Way of Central
Florida

Monique Byrd
Polk County Public
Schools

Craig Clevenger
Community Volunteer

Susan Copeland
Polk Education
Foundation

Beth Cummings
Polk County Public
Schools

John Diaz, Ph.D.
University of Florida/
IFAS

Angie Ellison
InnerAct Alliance

Kay Fields
Girls Inc. of Lakeland
and Bartow

Tiffani Gozdur
Citizens Bank & Trust

Ellen Katzman
PACE Center for Girls

Sarah Massey
United Way of Central
Florida

Laquieria Nottage
Polk County Public
Schools

Angie Pattison
Big Brothers Big
Sisters

Curtis Reddick
Citrus Center Boys &
Girls Club

La'Tonya Smith
PEARLS

Lauren Springfield
Lakeland Regional
Health

Lana Swartzwelder
The Libertore Fund for
Children

Nicole Walker*
University of Florida/
IFAS

***2018 Volunteer
Instructor**

**THANK YOU to our
2018 Volunteer
Instructors!**

Rob Arturi
Express Credentialing

Christina Boyce
Publix Super Markets

Naomi Boyer
Polk State College

Stacy Butterfield
Clerk of the Circuit
Court and County
Comptroller

Christina Criser
United Way of Central
Florida

Christina Ehlenbeck
Keller Williams Reality

Kim Elmhurst
Community Advocate

Chandra Frederick
Polk County BoCC

Taylor Freeman
Florida Department of
Health in Polk County

Lisa Watkins
Winter Haven Housing
Authority

Jenna Levine
Florida Department of
Health in Polk County

Jennifer Marshall
Florida DOT &
The Edge Theatre
Company

Nryka Riskin
Nyrka Riskin Image
and Business
Consulting

Marcus Wehby
Florida Southern
College & The Edge
Theatre Company

**HISTORY, ARTS AND HERITAGE DAY**

While visiting PGTV, students were given the opportunity to get both behind and in front of the camera as they explored careers in the creative arts industry.

They also had the opportunity to hear about careers in television news from Bay News 9 journalists, Stephanie Claytor and Rick Elmhurst.

**GOVERNMENT & PUBLIC SAFETY**

Students met many of "Polk County's finest" during a trip to the Center for Public Safety and Sheriff's Department. They discussed career opportunities with department representatives such as SWAT, K9 Unit, and the Emergency Operations Center Call Center.

**MEDICAL AND HEALTH SERVICES**

During a visit to the Lakeland Magic, students were introduced by the staff to a wide range of career opportunities available in the field of sports management and sports medicine.

Achievement Academy	Duke Energy	Lakeside Pediatrics	Polk State College
All About Aging	Early Learning Coalition of Polk County	Lanier Upshaw, Inc.	Polk State College Center for Public Safety
All Children's Hospital	Education and Enlightenment Group	Learning Resource Center	Polk State College Foundation
Allen & Company Investments	Emily Rogers Consulting & Coaching	LEGOLAND Florida Resort	Polk Transportation Planning Organization
Alive Culinary Coaching	Entrepreneur2Entrepreneur	Made	Public Education Partnership
Allstate Insurance	Envisors, a Pennoni Company	Madrid Engineering Group	Public Health Institute
American Cancer Society	Express Credentialing	Main Street Winter Haven	Publix Super Markets
American Red Cross	FIPR Institute	Mass Market	Publix Dairy Plant
Amerigroup	First Baptist Institutional Church	Maxijet, Inc.	RATH Connexions Center
Arts Ensemble Education Foundation	Florida Communications and Development Group	Maximize Digital Media	Rayl Engineering and Surveying, Inc.
ASAP Prints	Florida Department of Health in Polk County	McKeel Academy	Read Polk, Inc.
AT&T	Florida College Access Network	Medics on Demand	Redlands Migrant Christian Association
Bank of Central Florida	Florida DOT	Merritt Law Office	Ridge Professional Group
Bartow Economic Development Council	Florida Polytechnic University	MidFlorida Credit Union	Road & Trail Bicycles
Bartow Police Department	Florida Southern College	Michelle Githens State Farm	Saddle Creek Logistics Services
Bartow Regional Medical Center	Frontier Communications	Mosaic	Safe Routes to Schools
BayCare Health Systems	Fort Meade Chamber of Commerce	Mr. Ed's Circle of Trust	Saint Leo University
Bay News 9	Girls Inc. of Lakeland & Bartow	Mulberry Boys and Girls Club	SHR Human Resources, LLC
BB&T Bank	Girls Inc. of Winter Haven	Mu Zeta Lambda Education Foundation	Southeastern University
Big Brothers Big Sisters of Tampa Bay	GiveWell Community Foundation	Next Level Planning & Permitting	Southern Glazer's Wine & Spirits
Bok Tower Gardens	Haines City Area Chamber of Commerce	NOAA	Spherion
Career Source Polk	Haines City Economic Development Council	Northeast Polk Literacy Council	Stahl & Associates Insurance
Catapult	Harrison School for the Arts	Nyrka Riskin Image & Business Consulting	Stand Up Polk
Catering Oasis	Healthy Start Coalition	OMS Group, Inc.	Straughn & Turner PA
Central Florida Behavioral Health Network	Heart of Florida Regional Medical Center	PACE Center for Girls	TECO
Central Florida Development Council	Heartland for Children	Parker Street Ministries	Theatre Winter Haven
Central Florida Health Care	Higher Education Coordinating Council	PEARLS	The Edge Theatre Company
Central Florida Media Group	Homeless Coalition of Polk County	Peace River Center	The Health Councils, Inc.
Central Florida Regional Planning Council	Huntington Learning Center	Peak Annual Wellness Center	The Ledger
Champions Church	Inland Fiber & Data	Pediatric Partners of Winter Haven	The Libertore Fund for Children, Inc.
Chastain Skillman	InnerAct Alliance	Peterson & Myers	The Lunz Group
Children's Home Society	Inter-Ministerial Alliance	PGTV	Terrie Lobb Catering
Circle B Bar Reserve	10th Judicial Circuit	Polk Arts Alliance	Town of Dundee
Citizens Bank & Trust	Keiser University	Polk Career Academies	Town of Lake Hamilton
Citizens' Oversight Committee	Keller Williams Realty	Polk County 4H	Tracy Mouncey and Associates
Citrus Center Boys & Girls Club	Kelly Andrews LLC	Polk County BoCC	Tri-County Human Services
Citrus Connection	Kimley-Horn	Polk County Clerk of Courts	True Blue Winery
Citrus World	Lake Wales Area Chamber of Commerce	Polk County Council PTA	Two Blue Aces, LLC
City of Auburndale	Lake Wales Care Center	Polk County Farm Bureau	UF/IFAS Extension Polk County
City of Bartow	Lake Wales Charter District	Polk County Fire Department	United Way of Central Florida
City of Davenport	Lake Wales Economic Development Council	Polk County History Center	Visit Central Florida
City of Fort Meade	Lake Wales Literacy Council	Polk County Library Cooperative	VISTE
City of Frostproof	Lakeland Area Chamber of Commerce	Polk County Long Range Planning (BoCC)	Warner University
City of Haines City	Lakeland Area Chamber Foundation	Polk County Parks & Natural Resources Division	Watson Clinic
City of Lake Alfred	Lakeland Community Theatre	Polk County Property Appraiser	Webbs Candy Factory
City of Lake Wales	Lakeland Downtown Development Authority	Polk County Public Schools	Webber International University
City of Lakeland	Lenny's Grill & Sub - Bartow	Polk County School Board	Winter Haven Chamber of Commerce
City of Mulberry	Lakeland Economic Development Council	Polk County Sheriff's Office	Winter Haven Economic Development Council
City of Polk City	Lakeland Electric	Polk County Supervisor of Elections	Winter Haven Hospital
City of Winter Haven	Lakeland Flying Tigers	Polk County Tourism & Sports Marketing	Winter Haven Housing Authority
City of Winter Haven Natural Resources Division	Lakeland Linder Regional Airport	Polk County Tax Collector	Winter Haven Police Department
Clark Campbell Lancaster & Munson	Lakeland Magic	Polk County Waste Management & Recycling	Winter Haven Recreation & Culture Center
Clear Springs	Lakeland North Rotary Club	Polk Education Association	WISP Community
CNP	Lakeland Regional Health	Polk Education Foundation	Woman's Club of Winter Haven
D Print		Polk Education Pathways	YMCA of West Central Florida
Draken International		Polk Indigent Health Care	
DSM Technology Consultants		Polk Museum of Art	
Double B Bar Cattle Ranch			

POLK VISION



LEARN ENGAGE ALIGN DEVELOP

600 N. Broadway Ave, #201
Bartow, FL 33830
(863) 800-3520
info@polkvision.com
polkvision.com